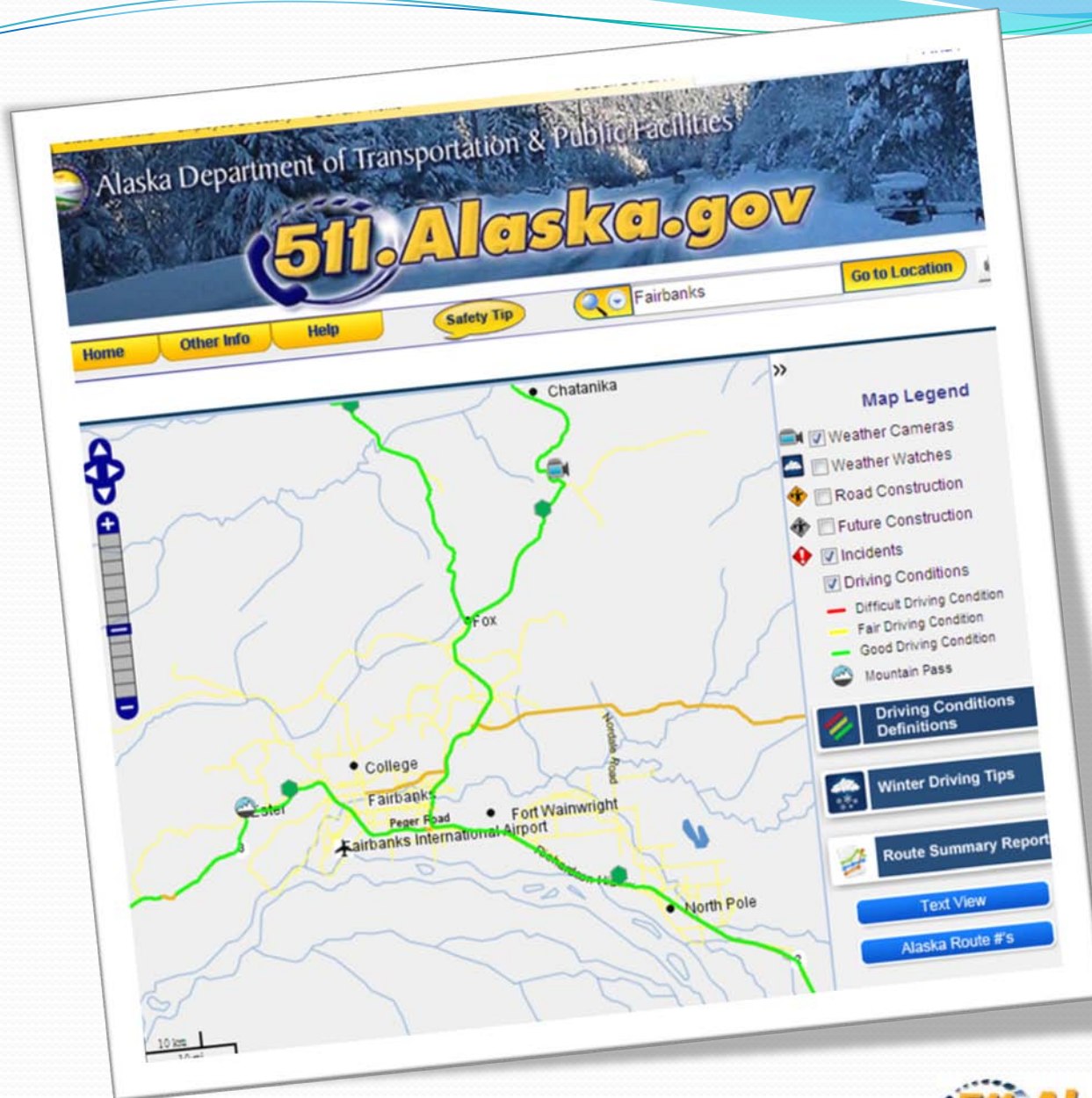


Real-Time Travel Information Through Alaska's 511



Jill Sullivan – Alaska DOT&PF

Brent Isenberg- LogicTree





State of Alaska Employee Directory DOT&PF Home Search DOT&PF: Find

Alaska Department of Transportation & Public Facilities

511.Alaska.gov

Home Other Info Help Safety Tip Fairbanks Go to Location

Taylor Highway closed Milepost 105 to Eagle. Call Taylor Highway Hotline (907)322-3844.

Weather Watch

Alert for Fairbanks North Star; Middle Tanana Valley; Yukon-Koyukuk (Alaska) Issued by the National Weather Service

Winter Weather Advisory

...winter weather advisory in effect until 6 am akdt thursday over the hills... the national weather service in fairbanks has issued a winter weather advisory for snow...which is in effect until 6 am akdt thursday. the first snow of the season is expected today and tonight. up to an inch of snow is expected over the

Last Updated: Wed Oct 6 2010 10:06

Map Legend

- ☐ Weather Cameras
- ☒ Weather Watches
- ☐ Road Construction
- ☐ Future Construction
- ☒ Incidents
- ☐ Driving Conditions
- Difficult Driving Condition
- Fair Driving Condition
- Good Driving Condition
- Mountain Pass

Driving Conditions Definitions


Winter Driving Tips

Route Summary Report

Text View

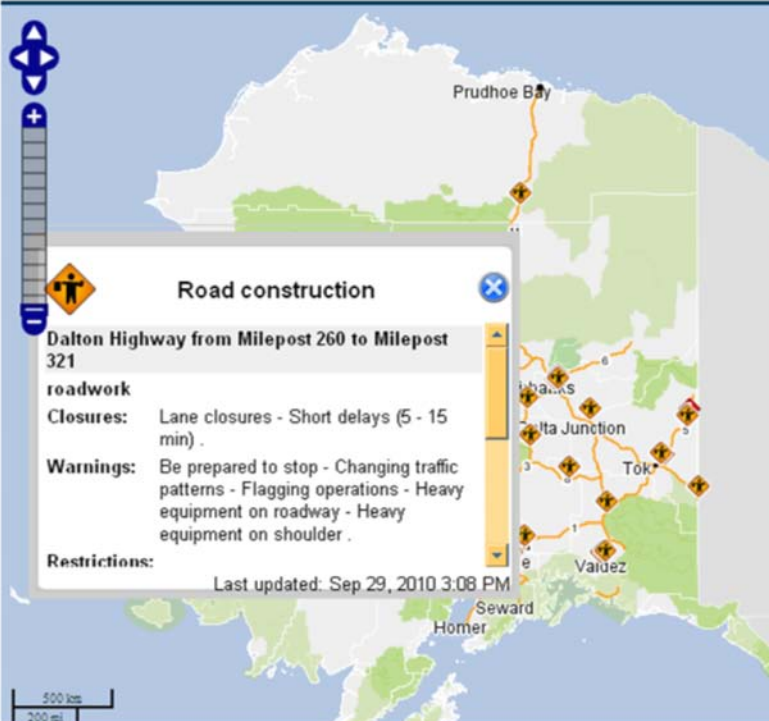
Alaska Route #'s

Alaska Mileposts



[Home](#)
[Other Info](#)
[Help](#)
[Safety Tip](#)

[Go to Location](#)



Road construction

Dalton Highway from Milepost 260 to Milepost 321

roadwork

Closures: Lane closures - Short delays (5 - 15 min) .

Warnings: Be prepared to stop - Changing traffic patterns - Flagging operations - Heavy equipment on roadway - Heavy equipment on shoulder .

Restrictions:

Last updated: Sep 29, 2010 3:08 PM

Map Legend

- ☐ Weather Cameras
- ☐ Weather Watches
- ☒ Road Construction
- ☐ Future Construction
- ☒ Incidents
- ☐ Driving Conditions
- Difficult Driving Condition
- Fair Driving Condition
- Good Driving Condition
- Mountain Pass

[Driving Conditions Definitions](#)

[Winter Driving Tips](#)

[Route Summary Report](#)

[Text View](#)

[Alaska Route #'s](#)

[Alaska Mileposts](#)



[Home](#)[Other Info](#)[Help](#)[Safety Tip](#)[Go to Location](#)

Closure

Taylor Highway from Milepost 105 to Milepost 155

Closures: - Road closure - Lane closure - Expect delays - Long delays .

Warnings: - Use caution when traveling through this area - Be prepared to stop - Repairs in progress - Maintenance equipment on the roadway - Slow moving maintenance vehicles .

Obstructions: - Pilot pass between Chitina and Eagle

Last updated: Oct 4, 2010 1:54 PM

Map Legend

- ☐ Weather Cameras
- ☐ Weather Watches
- ☐ Road Construction
- ☐ Future Construction
- ☒ Incidents
- ☐ Driving Conditions
- Difficult Driving Condition
- Fair Driving Condition
- Good Driving Condition
- Mountain Pass

Driving Conditions Definitions

Winter Driving Tips

Route Summary Report

[Text View](#)

[Alaska Route #'s](#)

[Alaska Mileposts](#)

[Home](#)
[Other Info](#)
[Help](#)
[Safety Tip](#)

[Go to Location](#)

Fair Driving Conditions

Dalton Highway from Milepost 129 to Milepost 156

Warnings:

Atmospherics:	Overcast
Pavements:	Icy patches
Snow:	
Wind Speed:	
Wind Dir :	
Temperature:	31 degrees

Last updated: Oct 5, 2010 8:54 AM

Map Legend

- ☐ Weather Cameras
- ☐ Weather Watches
- ☐ Road Construction
- ☐ Future Construction
- ☐ Incidents
- ☒ Driving Conditions
 - Difficult Driving Condition
 - Fair Driving Condition
 - Good Driving Condition
- ☐ Mountain Pass

[Driving Conditions Definitions](#)

[Winter Driving Tips](#)

[Route Summary Report](#)

[Text View](#)

[Alaska Route #'s](#)

[Alaska Mileposts](#)



5-1-1 Telephone

- Main menus
 - Highway Reports (road/road segment)
 - Incidents
 - Road construction
 - Winter Driving Conditions
 - NWS watches, warnings & advisories
 - Public Transit
 - By city or transit agency
 - Call transfers
 - Canada's 511, AMHS, AKRR, Whittier Tunnel, and more

Future Enhancements

Real-Time Vessel Tracking

- Real-time Vessel Tracking
 - AMHS – 7 vessels with satellite
 - Develop vessel tracking website
 - Google maps
 - ~December 1st
 - 511.alaska.gov - direct access to AMHS vessel tracking page



Real-Time Vessel Tracking

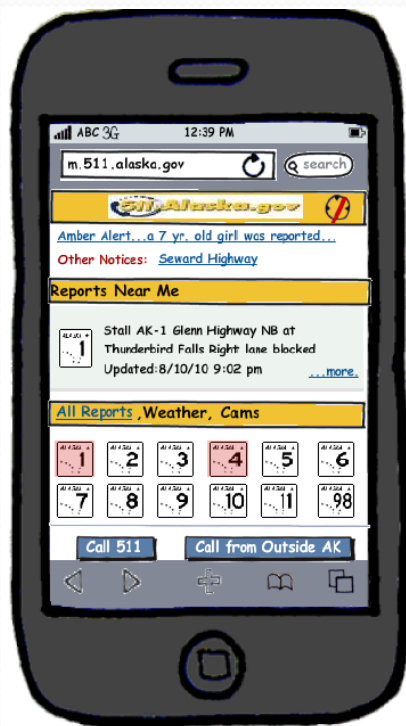
- 5-1-1 Phone menu
 - Ferry arrival
 - Schedule information
 - Location of ticket offices by port name
 - Hours of call center operation
 - Transfer to ticket offices
- Phone menu available via AMHS scheduling & reservation line



Real-Time Speed/Travel Times

- Glenn, Seward & Knik Goose Bay Road





PDA App



RSS Feeds

The Value of Real-Time Information

- Better Data → Better travel decisions
 - How are the road conditions?
 - What time do I have to leave, if at all?
 - Should I take an alternate route?
 - What will weather conditions when I drive home?
- Better DOT/Agency Communications
 - Public safety
 - Traffic & Event Management
 - Public relations
 - Promotion of public services
 - **Your customers demand it!**

Sources of Real-Time Data

- Traffic
 - Sensors / cameras / detectors
 - Probe data / tolling / blue tooth data
- Transit
 - CAD/AVL systems / satellite tracking / rail control systems
- Crowd Sourcing
 - Apps (opt in services – sharing of data)

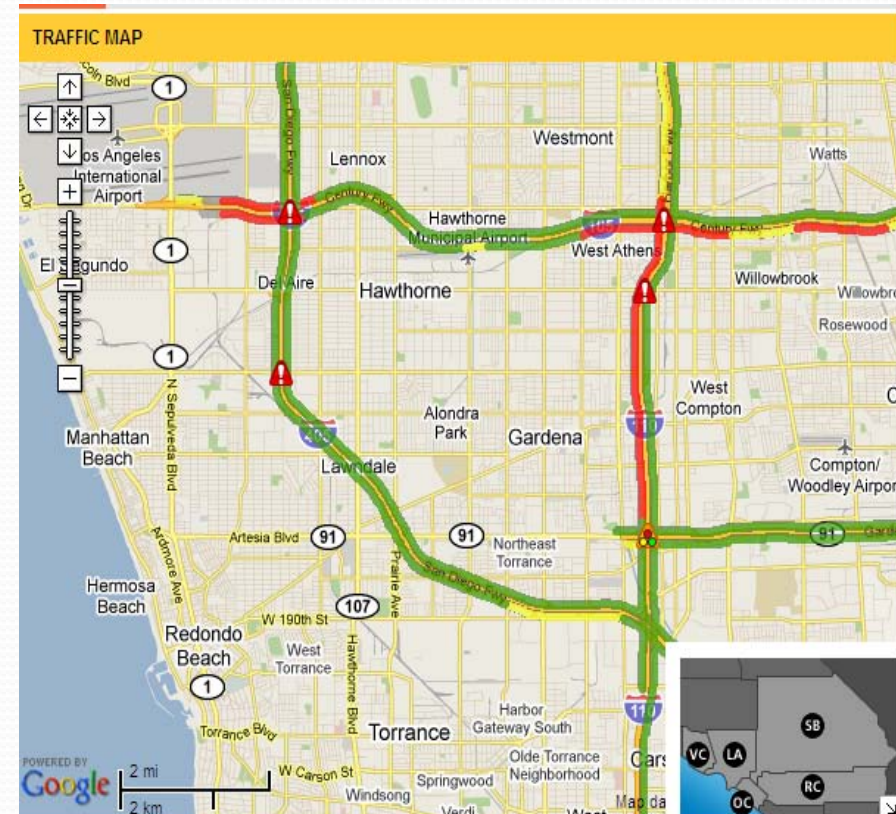
More Available Data + Delivery Channels = Explosion of potential services

Alaska 511 Infrastructure



Other States

- Los Angeles & Florida
 - Travel speeds & times
 - Sensor data from multiple districts
 - + probe data in FL
- South Carolina
 - Probe data
- Bay Area MTC
 - Parking availability



How is it used?

- Speeds callers through the system
- Broadens customer base
- Fills gaps in data
- Helps build brand equity and loyalty

Contact Information

Brent Isenberg, LogicTree
(301) 928-8908

bisenberg@logictree.com

Jill Sullivan, ADOT&PF
(907) 465-8592

Jill.sullivan@alaska.gov